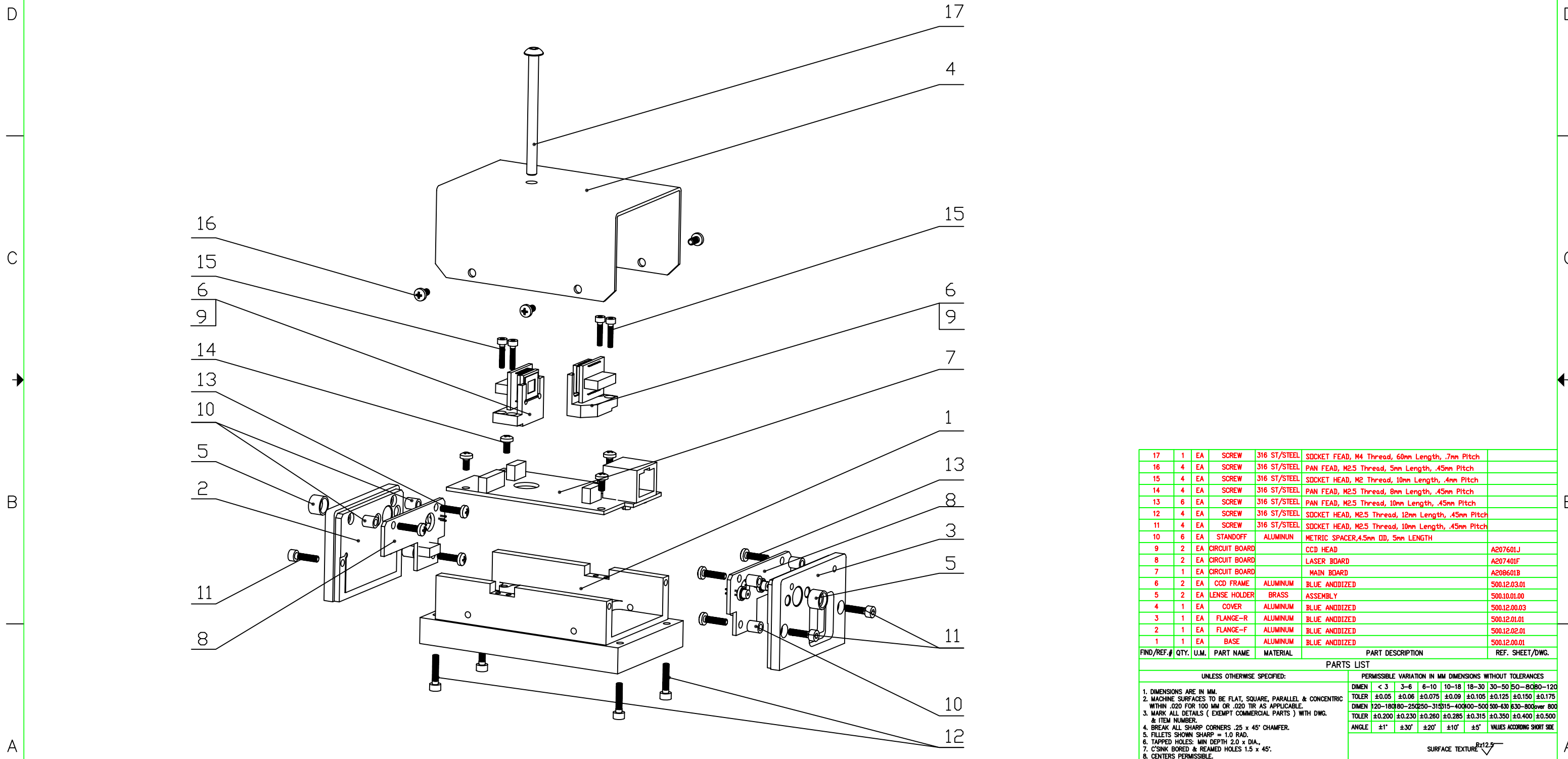


6 5 4 3 2 1

| REVISIONS | | | | |
|-----------|-----|-------------|------|----------|
| ZONE | REV | DESCRIPTION | DATE | APPROVED |
| | | | | |



| FIND/REF.# | QTY. | U.M. | PART NAME | MATERIAL | PART DESCRIPTION | REF. SHEET/DWG. |
|------------|------|------|---------------|--------------|--|-----------------|
| 17 | 1 | EA | SCREW | 316 ST/STEEL | SOCKET FEAD, M4 Thread, 60mm Length, .7mm Pitch | |
| 16 | 4 | EA | SCREW | 316 ST/STEEL | PAN FEAD, M2.5 Thread, 5mm Length, .45mm Pitch | |
| 15 | 4 | EA | SCREW | 316 ST/STEEL | SOCKET HEAD, M2 Thread, 10mm Length, .4mm Pitch | |
| 14 | 4 | EA | SCREW | 316 ST/STEEL | PAN FEAD, M2.5 Thread, 8mm Length, .45mm Pitch | |
| 13 | 6 | EA | SCREW | 316 ST/STEEL | PAN FEAD, M2.5 Thread, 10mm Length, .45mm Pitch | |
| 12 | 4 | EA | SCREW | 316 ST/STEEL | SOCKET HEAD, M2.5 Thread, 12mm Length, .45mm Pitch | |
| 11 | 4 | EA | SCREW | 316 ST/STEEL | SOCKET HEAD, M2.5 Thread, 10mm Length, .45mm Pitch | |
| 10 | 6 | EA | STANDOFF | ALUMINUM | METRIC SPACER, 4.5mm OD, 5mm LENGTH | |
| 9 | 2 | EA | CIRCUIT BOARD | | CCD HEAD | A207601J |
| 8 | 2 | EA | CIRCUIT BOARD | | LASER BOARD | A207401F |
| 7 | 1 | EA | CIRCUIT BOARD | | MAIN BOARD | A208601B |
| 6 | 2 | EA | CCD FRAME | ALUMINUM | BLUE ANODIZED | 500.12.03.01 |
| 5 | 2 | EA | LENS HOLDER | BRASS | ASSEMBLY | 500.10.01.00 |
| 4 | 1 | EA | COVER | ALUMINUM | BLUE ANODIZED | 500.12.00.03 |
| 3 | 1 | EA | FLANGE-R | ALUMINUM | BLUE ANODIZED | 500.12.01.01 |
| 2 | 1 | EA | FLANGE-F | ALUMINUM | BLUE ANODIZED | 500.12.02.01 |
| 1 | 1 | EA | BASE | ALUMINUM | BLUE ANODIZED | 500.12.00.01 |

| UNLESS OTHERWISE SPECIFIED: | | PERMISSIBLE VARIATION IN MM DIMENSIONS WITHOUT TOLERANCES | | | | | | | | | |
|---|--|---|---------|---------|---------|---------|---------|-----------------------------|---------|----------|--|
| 1. DIMENSIONS ARE IN MM. | | DIMEN | < 3 | 3-6 | 6-10 | 10-18 | 18-30 | 30-50 | 50-80 | 80-120 | |
| 2. MACHINE SURFACES TO BE FLAT, SQUARE, PARALLEL & CONCENTRIC WITHIN .020 FOR 100 MM OR .020 TIR AS APPLICABLE. | | TOLER | ±0.05 | ±0.06 | ±0.075 | ±0.09 | ±0.105 | ±0.125 | ±0.150 | ±0.175 | |
| 3. MARK ALL DETAILS (EXEMPT COMMERCIAL PARTS) WITH DWG. & ITEM NUMBER. | | DIMEN | 120-180 | 180-250 | 250-315 | 315-400 | 400-500 | 500-630 | 630-800 | over 800 | |
| 4. BREAK ALL SHARP CORNERS .25 x 45° CHAMFER. | | TOLER | ±0.200 | ±0.230 | ±0.260 | ±0.285 | ±0.315 | ±0.350 | ±0.400 | ±0.500 | |
| 5. FILLETS SHOWN SHARP = 1.0 RAD. | | ANGLE | ±1° | ±30° | ±20° | ±10° | ±5° | VALUES ACCORDING SHIRT SIDE | | | |
| 6. TAPPED HOLES: MIN DEPTH 2.0 x DIA. | | SURFACE TEXTURE $R_{a12.5}$ | | | | | | | | | |
| 7. C/SINK BORED & REAMED HOLES 1.5 x 45°. | | TOLERANCES ARE NOT ACCUMULATIVE | | | | | | | | | |
| 8. CENTERS PERMISSIBLE. | | | | | | | | | | | |
| 9. DO NOT SCALE DRAWING. | | | | | | | | | | | |
| 10. ALL WELDING TO CONFORM TO LATEST A.W.S. STANDARDS. | | | | | | | | | | | |

| | | | | | | | |
|--|-----------|----------|---------------------|-----------------|---|----------------|--------------|
| | NEXT ASSY | QTY | DRAWING INFORMATION | | ATLAS BRANDEIS | SIZE | SCALE |
| | | | NAME | DATE | | D | 1:2 |
| | | | DRAWN | Andrey 03.09.18 | | PROJECT NUMBER | 500 |
| | | | CHECKED | JB | | DRAWING NUMBER | 500.12.00.00 |
| | | APPROVED | | TITLE | NSW ALIGNMENT D-BCAM, BLUE ASSEMBLY | SHEET | REVISION |
| | | | | | | 1 OF 1 | A |

6 5 4 3 2 1