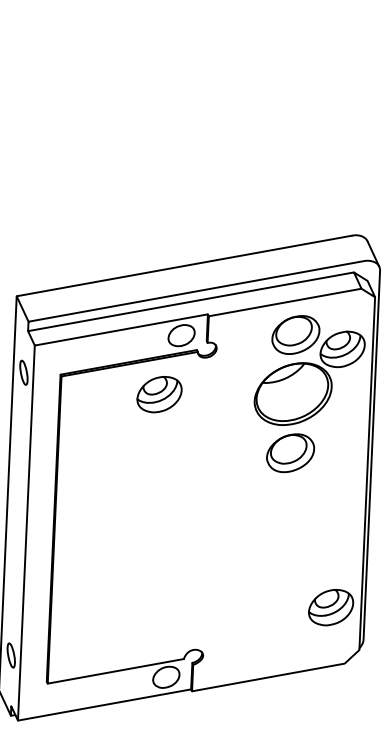
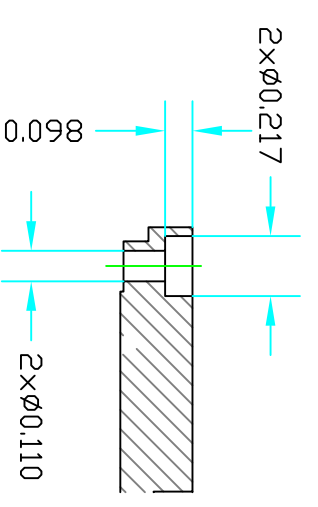
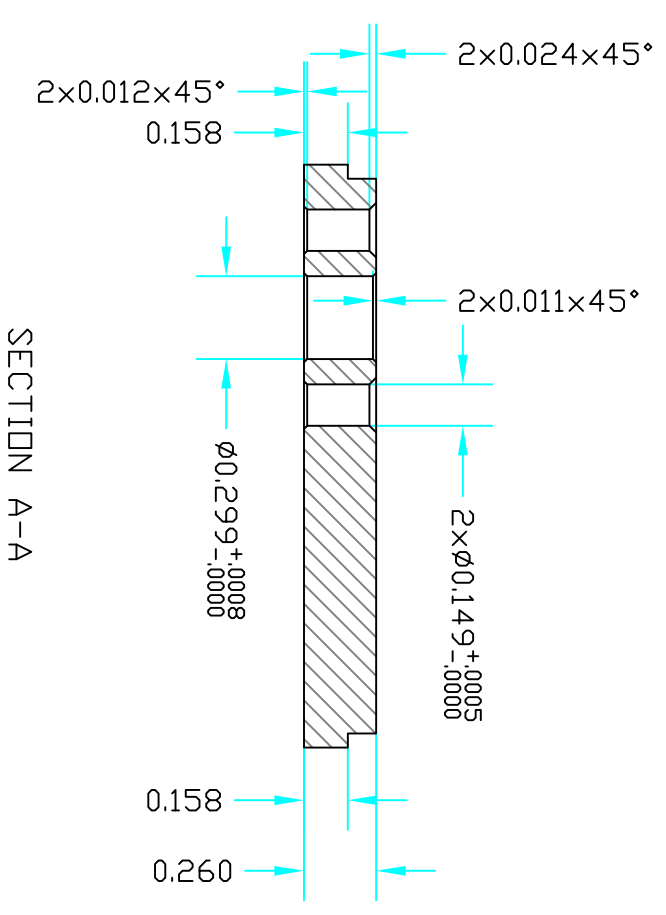
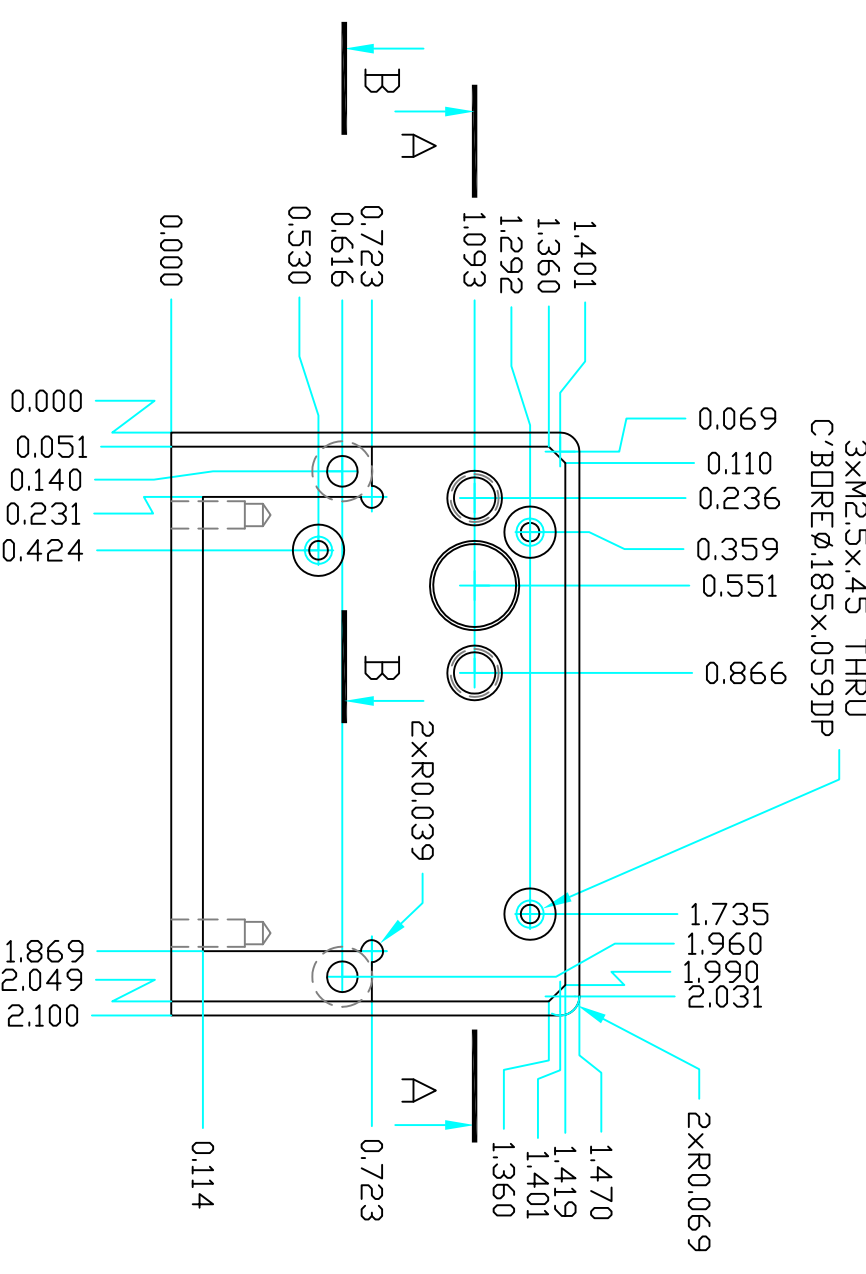


ZONE	REV	DESCRIPTION	DATE	APPROVED
DS	B	DIMENSIONS CHANGED	10.31.17	



- NOTES:
 1. DO NOT SANDBLAST
 2. MASK ALL THREADS BEFORE PLATING

FINO/REF.#	QTY.	UM.	PART NAME	MATERIAL	REF. SHEET/DWG.
1	EA	PLATE	ALUMINUM 6061 BLACK ANODIZED		

PARTS LIST			PERMISSIBLE VARIATION IN INCH DIMENSIONS WITHOUT TOLERANCES		
UNLESS OTHERWISE SPECIFIED					
1. DIMENSIONS ARE IN INCHES.					
2. MACHINE SURFACES TO BE FLAT, SQUARE, PARALLEL, & CONCENTRIC BELOW 12					
3. WITHIN .001 FOR 3 INCHES OR .001 TIR AS APPLICABLE.					
4. BREAK ALL SHARP CORNERS AT X 45° CHAMFER.					
5. FILLETS SHOWN SHARP = .04 RAD.					
6. TAPPED HOLES UNF/ENF CLASS 2B THREAD, MIN DEPTH 1.5 X DIA.					
7. CHAMFERED & REAMED HOLES 1/16 X 45°.					
8. CENTER PERMISSIBLE.					
9. ALL WELDING TO CONFORM TO LATEST AWS STANDARDS					
10. ALL WELDING TO CONFORM TO LATEST AWS STANDARDS					

REV	QTY	DATE	BY	CHKD	APP'D	DESCRIPTION
1	1	10.06.17	ANDREY	ANDREY		ISSUED FOR MANUFACTURE

ATLAS BRANDEIS		SIZE: D SCALE: 1:1 PROJECT NUMBER: 500 DRAWING NUMBER: 500.13.02.01 SHEET: 1 OF 1 REVISION: B
TITLE: NSW ALIGNMENT D-BEAM BLACK PLATE FRONT		HIGH ENERGY PHYSICS LABORATORY

